

Report No.: **158280992a 001**

Page 1 of 11

Client: ONE FOR FUN LIMITED

Contact Information: 3-5 Cambuslang Way, Gateway Office Park, Cambuslang, Glasgow, G32 8ND

Manufacturer's name: USD001

Test item(s): Toys

**Identification/
Model No(s):** REBOUND BALL
Item No.: SV21506

Sample obtaining method: Sending by customer

Condition at delivery: Test item complete and undamaged.

Sample Receiving date: 2023-11-17

Testing Period: 2023-11-17 to 2023-12-12

Place of testing: Chemical laboratory Hong Kong, Toys laboratory Hong Kong

Test Specification:

Please refer to "Test Result Summary List" on page 2 for details

Other information:

Country of Origin: China

The provided age grade of the item(s) : Not Provided

The appropriate age grade of the item(s) : Not requested (by client)

Per client's request, the item(s) was/ were tested for the age of over 3 years.

Packaging provided: No

Provided sample size: 10 sets

For and on behalf of
TÜV Rheinland Hong Kong Ltd.



Amenda Yung/
Senior CS Manager

2023-12-14

Date

Name/Position



Wong Yiu Tong , Tommy/
Senior Lab Manager

2023-12-14

Date

Name/Position

Sample information is provided by customer. Test result is drawn according to the kind and extent of tests performed.

This test report relates to the above mentioned test sample. Without permission of the test center this test report is not permitted to be duplicated in extracts. This test report does not entitle to carry any safety mark on this or similar products.

"Decision Rule" document announced in our website (<https://www.tuv.com/landingpage/en/qm-gcn/>) describes the statement of conformity and its rule of enforcement for test results are applicable throughout this test report.

Test Result Summary :**Test Specification:****Test result:**

- | | |
|--|------|
| 1 ASTM F963-17: Mechanical and physical
(As per client request, Clause 5-Labeling requirements, 6-Instructional Literature
and 7-Producer's Marking were excluded in this test report) | PASS |
| 2 ASTM F963-17: Flammability on solids and soft toys | PASS |
| 3 15 USC 1278a (CPSIA Sect. 101), ASTM F963-17 Sect. 4.3.5.2 and Safe
Drinking Water and Toxic Enforcement Act of 1986 (Proposition 65): Total lead
content in substrate materials | PASS |
| 4 ASTM F963-17 Sect. 4.3.5.1 and 4.3.5.2 : Soluble heavy metal | PASS |
| 5 CPSIA Section 108 as amended by 16 CFR 1307 : Phthalates | PASS |

California Safe Drinking Water and Toxic Enforcement Act of 1986 (CA Prop 65): PASS
DEHP, BBP, DBP, DIDP, DnHP content

Test Report No.: 158280992a 001

Page 3 of 11

Material List:

Item: REBOUND BALL
Item No.: SV21506

Material No.	Material	Color	Location
M001	Whole Product	Multicolor	Whole Product
M002	Plastic	Black	Hook side of velcro
M003	Plastic	Black	Connection of elastic band
M004	Textile	Black	Loop side of velcro
M005	Textile	Black	Elastic band
M006	Foam	Light brown w/ multicolor printing	Ball
M007	Plastic	Dark Grey	Elastic band

Test Report No.: 158280992a 001

Page 4 of 11

1.ASTM F963-17: Mechanical and physical
Test result:

Test No:	T001
Material No:	M001
4. Safety requirements	
4.1 Material Quality (visual check)	PASS
4.7 Accessible Edges	PASS
4.9 Accessible Points	PASS
4.21 Projectile Toys	PASS
4.37 Yo Yo elastic tether toys (#)	PASS
5. Labeling requirements	
5.1 Federal government requirements	Not Conducted
5.2 Age Grading Labeling	Not Conducted
5.3 Safety Labeling Requirements	Not Conducted
5.4 Aquatic Toys	Not Conducted
5.5 Crib and Playpen Toys	Not Conducted
5.6 Mobiles	Not Conducted
5.7 Stroller and Carriage Toys	Not Conducted
5.8 Toys Intended to be Assembled By an Adult	Not Conducted
5.9 Simulated Protective Devices	Not Conducted
5.10 Toys with Functional Sharp Edges or Points	Not Conducted
5.11 Small Objects, Small Balls, Marbles and Balloons	Not Conducted
5.12 Toy caps	Not Conducted
5.13 Art Materials	Not Conducted
5.16 Promotional materials	Not Conducted
5.17 Magnets	Not Conducted
6. Instructional Literature	
6.1 Definition and Description	Not Conducted
6.2 Crib and Playpen Toys	Not Conducted
6.3 Mobiles	Not Conducted
6.4 Toys Intended to be Assembled By an Adult	Not Conducted
6.7 Toys in Contact with Food	Not Conducted
6.8 Toy Chests	Not Conducted
7. Producer's markings	
7.1 Name and address of the producer or the distributor	Not Conducted
7.3 Toy Chests	Not Conducted

Test Report No.: 158280992a 001

Page 5 of 11

Use and Abuse Tests:

The submitted samples were undergone the use and abuse tests in accordance with FHSA 16 CFR and whichever is applicable the tested age grade.

Age Category	Impact Test	Flexure Test	Torque Test	Tension Test	Compression Test
0-18 Months 16 CFR 1500.51	10 x 4.5 ft	120 Arc 30 Cycles 10 lbs	2 in-lbs	10 lbs	20 lbs
19-36 Months 16 CFR 1500.52	4 x 3 ft	120 Arc 30 Cycles 15 lbs	3 in-lbs	15 lbs	25 lbs
37-96 Months 16 CFR 1500.53	4 x 3 ft	120 Arc 30 Cycles 15 lbs	4 in-lbs	15 lbs	30 lbs

The clause and/or sub-clause would be indicated only in the test report whichever applicable. The comprehensive result report is available upon request.

Test Report No.: 158280992a 001

Page 6 of 11

2.ASTM F963-17: Flammability on solids and soft toys**Test result:**

Test No:	T001
Material No:	M001
4 Requirements	
4.2 Flammability on solids and soft toys	PASS

The burning rate of the most severe part = IBE

Note: Maximum permissible burning rate = 0.1 Inch/sec.

Abbreviation: IBE = Ignite But Self-extinguish

Test Report No.: 158280992a 001

Page 7 of 11

3.15 USC 1278a (CPSIA Sect. 101), ASTM F963-17 Sect. 4.3.5.2 and Safe Drinking Water and Toxic Enforcement Act of 1986 (Proposition 65): Total lead content in substrate materials

Test method: CPSC-CH-E1001-08.3 and CPSC-CH-E1002-08.3 (Microwave method)

Test result:

Test No.	Material No.	Test Parameter	Unit	RL	Regulatory Requirement	Test Result
T001	M002 + M003	Lead Content	ppm	10	100	< RL
T002	M004 + M005	Lead Content	ppm	10	100	< RL
T003	M006	Lead Content	ppm	10	100	< RL
T004	M007	Lead Content	ppm	10	100	< RL

Abbreviation: < = less than
RL = Reporting Limit
ppm = parts per million

Remark:

- * The highlighted result was found to be more than the maximum permissible limit.
- *1 Requirement according to Safe Drinking Water and Toxic Enforcement Act of 1986 (Proposition 65):
 - a) Paint or other surface coating shall not contain more than 0.009% (90 ppm) total lead content
 - b) All other components shall not contain more than 0.01% (100 ppm) total lead content

Test Report No.: 158280992a 001

Page 8 of 11

4.ASTM F963-17 Sect. 4.3.5.1 and 4.3.5.2 : Soluble heavy metal

Test method: For paint and similar surface-coating materials: ASTM F963-17 Section 8.3.2 - 8.3.4
 Method to Dissolve Soluble Matter for Surface Coatings, Preparation of Test Samples
 and Test Procedures

For substrate: ASTM F963-17 Section 8.3.5 Soluble Element Test Method for Substrate
 Materials

Test result:

Test No.	Material No.	Sb	As	Ba	Cd	Cr	Pb	Hg	Se	Mass of trace amount (mg)	Conclusion
		Maximum Permissible Limit of Any Toy Materials except Modelling Clay (mg/kg)									
		60	25	1000	75	60	90	60	500		
		Maximum Permissible Limit of Modelling Clay (mg/kg)									
		60	25	250	50	25	90	25	500		
		RL (mg/kg)									
		5	5	2.5	2.5	2.5	2.5	2.5	10		
T001	M002	< RL	< RL	2.7	< RL	< RL	< RL	< RL	< RL	-	PASS
T002	M003	< RL	< RL	6.5	< RL	< RL	< RL	< RL	< RL	69	PASS
T003	M004	< RL	< RL	< RL	< RL	< RL	< RL	< RL	< RL	-	PASS
T004	M005	< RL	< RL	2.9	< RL	< RL	< RL	< RL	< RL	-	PASS
T005	M006	< RL	< RL	< RL	< RL	< RL	< RL	< RL	< RL	-	PASS

Abbreviation: < = less than
 RL = Reporting Limit
 mg/kg = milligram per kilogram

Remark:

* Migration results of eight elements shown are the adjusted analytical results

Element	Sb	As	Ba	Cd	Cr	Pb	Hg	Se
Analytical Correction (in %)	60	60	30	30	30	30	50	60

** The highlighted result was found to be more than the maximum permissible limit.

*** According to ASTM F963-17, if the weight of a test portion of toy material is less than 10 mg, the analysis of migration of certain elements would not be required. If the weight of a test portion of toy material is between 10 mg and 100 mg, the analytical results would be calculated as though 100mg of the test portion had been used.

Test Report No.: 158280992a 001

Page 9 of 11

5. Phthalates content

Test Method: Ref. to CPSC-CH-C1001-09.4

Test Result:

Test No.				T001	T002	T003
Material No.				M002 + M003	M006	M007
Test Parameter	CAS NO	Unit	RL	Result	Result	Result
Diethylhexyl phthalate (DEHP)	117-81-7	%	0.01	< RL	< RL	< RL
Dibutyl phthalate (DBP)	84-74-2	%	0.01	< RL	< RL	< RL
Benzylbutyl phthalate (BBP)	85-68-7	%	0.01	< RL	< RL	< RL
Diisobutyl phthalate (DIBP)	84-69-5	%	0.01	< RL	< RL	< RL
Diisononyl phthalate (DINP)	28553-12-0, 68515-48-0	%	0.01	< RL	< RL	< RL
Diisodecyl phthalate (DIDP)	26761-40-0, 68515-49-1	%	0.01	< RL	< RL	< RL
Di-n-pentyl phthalate (DnPP)	131-18-0	%	0.01	< RL	< RL	< RL
Di-n-hexyl phthalate (DnHP)	84-75-3	%	0.01	< RL	< RL	< RL
Dicyclohexyl phthalate (DCHP)	84-61-7	%	0.01	< RL	< RL	< RL
Conclusion: CPSIA Section 108 as amended by 16 CFR 1307				Pass	Pass	Pass
Conclusion: CA Prop 65 DEHP, BBP, DBP, DIDP and DnHP content				Pass	Pass	Pass

Abbreviation: < = less than
 RL = Reporting Limit
 % = percentage

Test Report No.: 158280992a 001

Page 10 of 11

Remark:

- Requirement of Consumer Product Safety Improvement Act 2008, section 108, as amended by 16 CFR 1307 is summarized below:

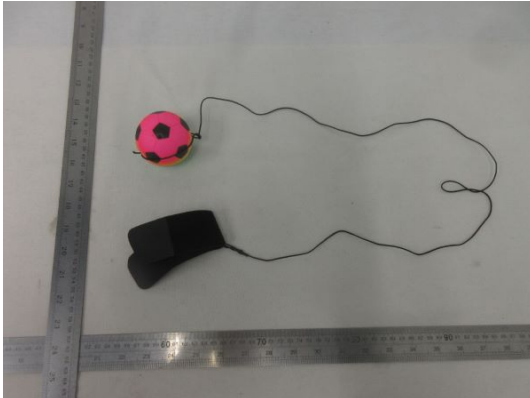
Parameter	Unit	Maximum Permissible Limit
Accessible plasticized components in children's toy or childcare article:		
Dibutyl phthalate (DBP), Benzylbutyl phthalate (BBP), Diethylhexyl phthalate (DEHP), Diisononyl phthalate (DINP), Diisobutyl Phthalate (DIBP), Di-n-pentyl Phthalate (DPENP) (DnPP), Di-n-hexyl Phthalate (DHEXP) (DnHP), Dicyclohexyl Phthalate (DCHP)	%	0.1 (each)

- Requirement of Safe Drinking Water and Toxic Enforcement Act of 1986 (Proposition 65):DEHP, BBP, DBP, DIDP and DnHP content
1,000ppm (0.1%) each as quoted from County of Alameda Case No. BG-07350969

Test Report No.: 158280992a 001

Page 11 of 11

Sample Photo



- END -

c) In the case of TÜV Rheinland being legally registered and existing in Hong Kong, to Hong Kong International Arbitration Centre (HKIAC) to be settled by arbitration under the HKIAC Administrative Arbitration Rules in force when the Notice of Arbitration is submitted in accordance with these rules. The arbitration shall take place in Hong Kong. The decision of the relevant arbitration tribunal shall be final and binding on both parties. The arbitration fee shall be borne by the losing party.